

Tech Bulletin

Nailing your autumn to-do list

Your must-have BASF solutions for this season

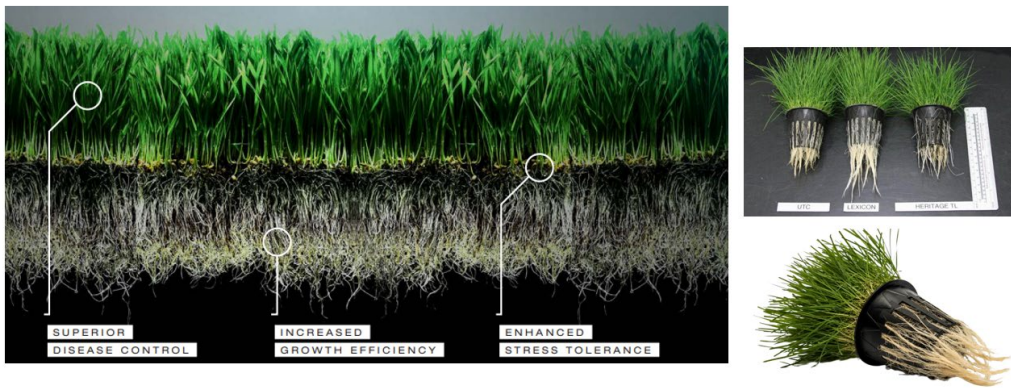
Autumn is a busy time for turf managers. Renovations; preventative fungicide programs; warm season weed management; pre-emergent weed control – the list is long! **Our team have curated a quick guide of must-have BASF technologies to suit your autumn program – check it out below.**

1. Renovations

Managing opportunistic pathogens with Lexicon

We know renovations can both **incite turf stress and leave surfaces vulnerable to opportunistic pathogens**. With autumn renovations coming up or underway, and diseases posing a significant risk, it is essential to protect your turf. **Lexicon® Intrinsic® Brand Fungicide is your trusted partner for renovations**, offering broad spectrum disease control and plant health benefits combined.

Our Xemium® and Intrinsic® technologies are not stressguards or colourants, rather they benchmark plant health and protection. Visually we see longer, denser roots, increased health and volume of foliage compared to untreated or competitor fungicides.



Product snapshot:

167g/L Fluxapyroxad + 333g/L Pyraclostrobin

Group 7|11 Fungicide – SDHI | Strobilurin

1L/ha -1.5L/ha

500ml eco pack

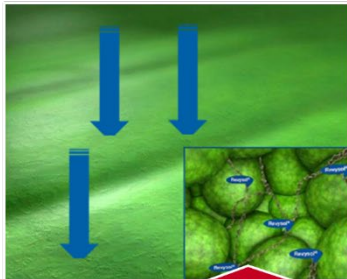
Tech Bulletin

2. Preventative fungicide applications

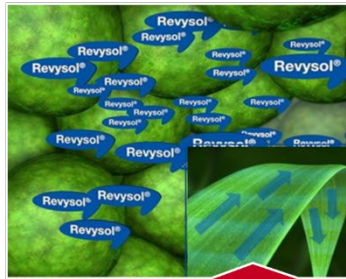
Spring Dead Spot (SDS) Program

Initial application windows for **Spring Dead Spot (*Ophiosphaerella spp.*) (SDS)** are nearly upon turf managers as soil temperatures are beginning to decline following summer. Well-timed, preventative fungicide applications for SDS are essential in autumn, with second phase applications in spring.

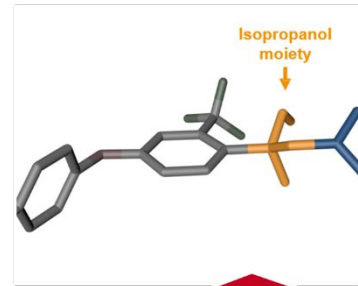
Maxtima® Fungicide offers broad spectrum control of diseases, including ERI pathogens and SDS with a powerful residual. Its excellent binding capacity and flexible molecular structure enables unmatched control, at low use rates, with no compromise to turf safety. The Revysol® technology powering Maxtima is retained in an inner leaf reservoir, slowly released over time, making it perfect for a SDS (or broader ERI) preventative program.



Rapid uptake of **Revysol** provides fast action to stop fungal infections.



After uptake, the majority of **Revysol** is well protected within the leaf. Slow release from this inner-leaf reservoir provides long lasting protection.



The first **Isopropanol-Azole**: molecule flexibility ensures excellent binding capacity and adaptability.



Product snapshot:

400g/L Mefentrifluconazole

Group 3 Fungicide – DMI

1.25L/ha - 2.5L/ha

1.25L & 5L eco pack

Tech Bulletin

3. Managing warm season encroachment on greens

Kicking off your Pylex® season

With autumn weather beginning to kick in across the country, and the growth of warm-season weeds beginning to slow, it is the perfect time to begin first applications of Pylex Herbicide. Offering the control of warm season grass and broadleaf weeds within cool season turf, this unique technology is **the only solution for selective weed control of its kind.**

Pylex Herbicide replaces current manual, mechanical removal of unwanted encroaching turf from your collars into your greens. **It revolutionises Bent grass greens management in not only its efficacy, but also its advances to labour efficiencies and turf safety with its pre-measured packaging.**

Now is the perfect time to refresh on application strategies and factors to optimise success like the use of a MSO, sprayer calibrations, and optimum weather conditions.



Oils such as Hasten (or other high quality MSO type oils) are essential to achieve consistent reliable control.



Early encroachment and actively growing weeds are more susceptible than more advanced growth stages.



Good coverage of the target weed is essential to achieving reliable control.



Conditions conducive to maximum photosynthesis (moist, warm, bright sunshine) are ideal.



Cool weather can reduce the speed of activity.

Product snapshot:

337g/L Topramezone

Group 27 Herbicide – HPPD Inhibitor

Bent grass label rate - 0.375mL /100m² in 4-6L of water + 0.5% MSO

Packed in a pre-measured 0.375ml syringe for easy handling



Tech Bulletin

4. Kikuyu management

Drive[®] XL, why Quinclorac formulations matter

Best Kikuyu management is achieved in autumn as warm season grasses move towards dormancy. With a narrow window to achieve effective results, why compromise with inferior formulations of Quinclorac?

Drive XL's superior patented SL formulation provides rapid uptake of the active ingredient, leading to faster, more consistent results in your Kikuyu management program. Alternative DF formulations compromise on speed of performance and efficacy, in some cases nearly 2X less control at some growth stages (*Figure 1*).



Figure 1: Improved performance of Drive XL



Product snapshot

180g/L Quinclorac

Group 4 Herbicide – Synthetic auxins

4.6L/400L water

5L bottle

Tech Bulletin

5. Pre-emergent weed control

Taking advantage of Freehand®'s flexibility

Reducing soil temperatures following summer also signals the implementation of our pre-emergent weed management program. Taking the time to consider your strategy, across your whole enterprise, paths and garden beds included, means you can optimise your labour efficiently for the next few months.

Freehand Herbicide, is a dual MOA, easy to use granular formulation with ultimate flexibility. With extended residual control for up to 3 months in turf and ornamental use situations, Freehand is the perfect option for your entire enterprise (clubhouse gardens included!).

With over 60 weeds on label, while being safe on warm season turf, Freehand is the only pre-emergent tool to include the active ingredient Dimathenamid-P making it an essential resistance management tool.

Freehand provides consistent, long-lasting control compared to competitors



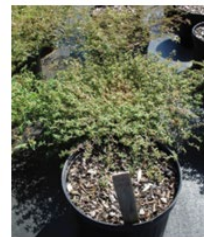
Untreated Control



Freehand, 100kg/ha



480g/L Proflam, 2L/ha



20g/kg Oxadiazon, 200kg/ha



Freehand Herbicide applied at 10g/m²



20g/kg Oxadiazon applied at 10g/m²



Product snapshot

10g/kg Pendimethalin + 7.5g/kg Dimethenamid-P

Group 3|15 Herbicide

1-2kg/100m²

22.7kg bag

BASF
We create chemistry

Find out more about BASF Turf Solutions [here](#)

Connect with our team!

