

Greens Management with Pylex® Herbicide

Your Pylex pre-season checklist

Strikingly Effective

Pylex at a glance

Pylex Herbicide offers the control of warm season grass and broadleaf weeds within cool season turf. This unique technology enables the safe and efficient removal of broadleaf weed species and warm season turf species, including Buffalo, Kikuyu, Couch and Queensland Blue Couch grasses, from cool season turf, including on Bent grass greens. **As the only solution for selective weed control of its kind, Pylex Herbicide replaces current manual, mechanical removal of unwanted encroaching turf from your collars into your greens.**

Pylex Herbicide revolutionises Bent grass greens management in not only its efficacy, but also its advances to labour efficiencies and turf safety with its pre-measured packaging.

337g/L Topramezone

Group 27 Herbicide – HPPD Inhibitor

Bent grass label rate - 0.375mL /100m² in 4-6L of water + 0.5% MSO

Packed in a pre-measured 0.375ml syringe for easy handling



Turf Managers are loving Pylex

Delivering visual results across the country

Our valued customers are loving the fast and effective results of Pylex Herbicide, especially the visual reduction of weed populations! We are looking forward to seeing more of these fantastic results this season.

Pylex®

Herbicide

"The initial bleaching of the couch and kikuyu was observed 10 days after the first treatment and continued throughout the following months. By end of the assessment, 28 days after the second spring application we have seen a dramatic decline in couch and kikuyu presence.

The resulting bare areas have commenced being re-populated with bentgrass. We are very impressed with the results to date."

-Golf Course Solutions

We create chemistry

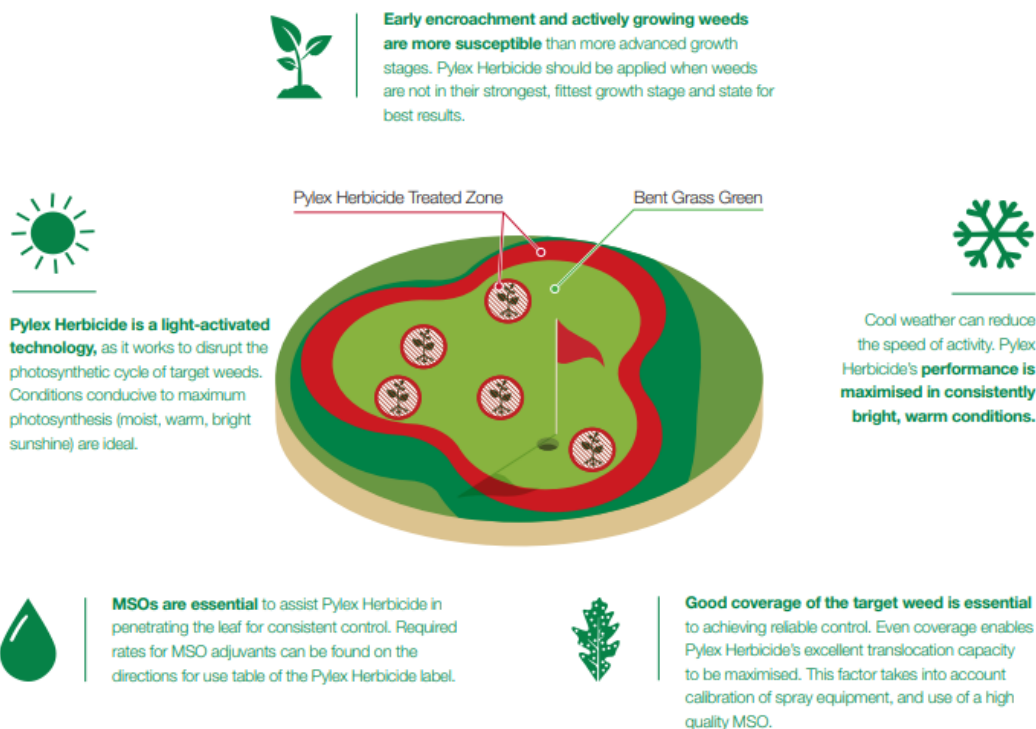


Tech Bulletin

Considering Factors for Success

Kicking off your Pylex season

Considering the highly specific and targeted behaviour of Pylex Herbicide, it is important to ensure correct application for reliable results, taking particular care with **sprayer calibration** and **conditions conducive for success**. In addition to calibration of equipment, there are a number of factors which affect control and should be considered when planning your Pylex Herbicide program. Pylex Herbicide promotes turf safety and ease of application while minimising the risk of mixing errors. Application strategies capture Pylex Herbicide's capacity for versatile greens management including inner green perimeter, whole green, large patch or targeted spot spray treatments.



Ideal application windows for Pylex Herbicide should take into account local factors, and factors affecting control.

Autumn brings the slowed growth of our target warm season grasses, cooler ambient and soil temperatures, and the opportunity for 2-3 consecutive treatments at 21-28 day intervals.

Spring offers a second opportunity for application as light intensity is maximised while also favouring susceptible weed growth stages. There are opportunities for additional applications, and movement outside of this seasonal window, dependent on climate and establishment of the target runners.

Find out more about Pylex [here](#)

Connect with our team!



Tech Bulletin



Finetuning the incorporation of Pylex into greens management

What is the ideal use rate?

For Bent grass greens: 0.375 ml/100m² in 4-6L of water + 0.5% MSO is the labeled rate of application. At this rate two repeat applications 21-28 days apart will be required.

For other cool season turf: 0.75 ml/100m² in 4-6L of water + 0.5% MSO is the labeled rate of application. At this rate a single application will likely be sufficient.

What is the typical reapplication timing for Pylex Herbicide?

Typical re-application for Pylex Herbicide is every 21-28 days.

Are 3 applications of Pylex Herbicide likely to be required?

Proposed application strategies outline the requirement for two repeat applications in most cases (on Bent grass greens). The requirement for three sequential applications may be required dependent on the time of year and establishment of the target weed.

Is there a risk of turf injury after scarifying?

Local trials have demonstrated that scarifying did not result in increased risk or performance when Pylex Herbicide is applied. However, it is important to ensure turf is not stressed prior to application.

What is the residual timeframe for re-seeding around a Pylex Herbicide program?

Do not apply for 28-days after seeding tolerant turf. Avoid application 7-14 days before seeding tolerant turf.

What is the likelihood of translocation into the collar?

Clear defined lines with a flat fan nozzle, can be achieved when treating close to the collar. Users should take care in ensuring the edge of the spray does not cover the warm season collar, which will be affected by the chemistry if treated. Tracking on shoes doesn't occur once spray has dried.

Can Pylex be used in conjunction with PGR programs?

Yes, Pylex is suitable for use in a spray program which includes Trinexapac-ethyl.

When are the visual effects likely to be observed after applying Pylex Herbicide?

Visual effects on susceptible species occur 7-10 days after application

Are there any concerns for turf injury when applying Pylex Herbicide to Bent grass greens of mixed swards?

Pylex Herbicide is suitable for use on mixed swards. In some cases some minor transient discolouration of some Bent grass cultivars may be observed in the first 7-14 days following application. In all cases during local trials, the Bent grass quickly recovered from this discolouration and it has not been observed in all treatments.

